

KEY

1. MEANS OF ESCAPE

- FS30 - 30 MINUTE FIRE DOOR WITH SMOKE SEAL
- FS30SC - 30 MINUTE SELF CLOSING FIRE DOOR WITH SMOKE SEAL
- FS60 - 60 MINUTE FIRE DOOR WITH SMOKE SEAL
- FS60SC - 60 MINUTE SELF CLOSING FIRE DOOR WITH SMOKE SEAL
- M - DENOTES DOOR IS ON A MAGNETIC HOLD-OPEN WHICH RELEASES UPON THE FIRE ALARM
- - PRIMARY ROUTE OF ESCAPE

2. FIRE ALARM

- REFER TO G4S INSTALLATION LAYOUT

3. EMERGENCY LIGHTING

- E1A - Zumtobel Resclite C Antipanic
- E1C - Zumtobel Resclite C Escape
- E6 - ACDC Arena
- E8 - Zumtobel Resclite C Antipanic
- XJe - Tekna Nautic Ilford Wall C
- XCe - Bega LED Wall Light
- E1 - Eaton Micropoint 2 Open Area
- E2 - Eaton Micropoint 2 Escape Route
- E3 - Eaton Micropoint 2 High Output
- E5 - Zumtobel Onlite Resclite C Antipanic
- E6 - Zumtobel Onlite Resclite C Antipanic IP65
- hkxBE - Concord Sterling Bulkhead
- hkFE - Sylvania Sylproof Superia LED
- hkKE - Thorn Loire
- hkxAE - Bega LED Wall Light

4. FIRE FIGHTING EQUIPMENT

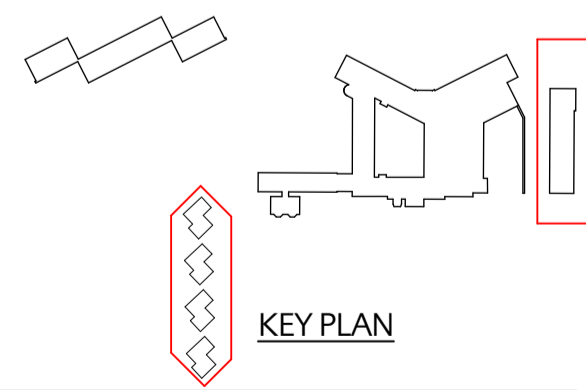
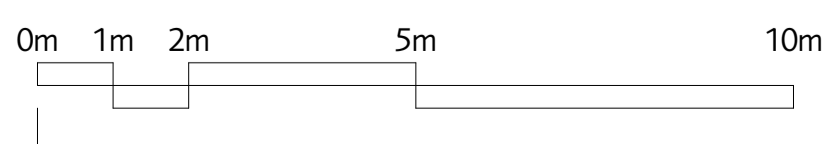
- Portable fire extinguisher, final layout and type tbc
- Fire alarm panel
- Ansl fire suppression
- Fire fighting water storage tank, refer to site plan for positions

5. SIGNS AND NOTICES

- CES1, - Zumtobel Onlite Artsign ED Ceiling Recessed
- CES2, - Zumtobel Onlite Artsign ED Ceiling Recessed
- CES5, - Zumtobel Onlite Artsign ED Ceiling Recessed
- CES6, - Zumtobel Onlite Artsign ED Ceiling Recessed
- CES7, - Zumtobel Onlite Artsign ED Ceiling Recessed
- CES8, - Zumtobel Onlite Artsign ED Ceiling Recessed
- WES1, - Zumtobel Onlite Artsign ED Wall Recessed
- WES4, - Zumtobel Onlite Artsign ED Wall Recessed
- WES5, - Zumtobel Onlite Artsign ED Wall Recessed
- WES6, - Zumtobel Onlite Artsign ED Wall Recessed
- WES7, - Zumtobel Onlite Artsign ED Wall Recessed
- WES8, - Zumtobel Onlite Artsign ED Wall Recessed
- EXIT 1 - Zumtobel Onlite Artsign ED Wall Recessed
- EXIT 2 - Eaton Exit SE LED
- EE - iGuzzini motus

LICENSING

- Area to be licensed for sale of alcohol for consumption on the premises



DRAFT	<p>status: FOR LICENSING APP.</p> <p>revisions: - xx/02/2018 Issued for licensing application</p>	<p>HUDSON Architects NORWICH 27 St Andrew Street Norwich NR2 4TP Tel: 01603 766220 MOBILE 07471 154915 35 High Street HA8 NR25 6BN LONDON 277 Cannon Street London EC1M 6EJ www.hudsonarchitects.co.uk info@hudsonarchitects.co.uk</p>
	<p>job: MACHRIE HOTEL & GOLF LINKS</p> <p>address: PORT ELLEN ISLAY</p> <p>licensing app: LICENSING APP.</p> <p>site: DRIVING RANGE AND COTTAGES</p> <p>scale: 1:100@A1 date: 20/02/2018</p>	<p>job reference: ISL LA-102 -</p> <p>drawing number: -</p> <p>revision: -</p> <p><small>Do not scale off dimensions. Check all dimensions on site and report any apparent discrepancy immediately to Architect. This drawing is copyright.</small></p>